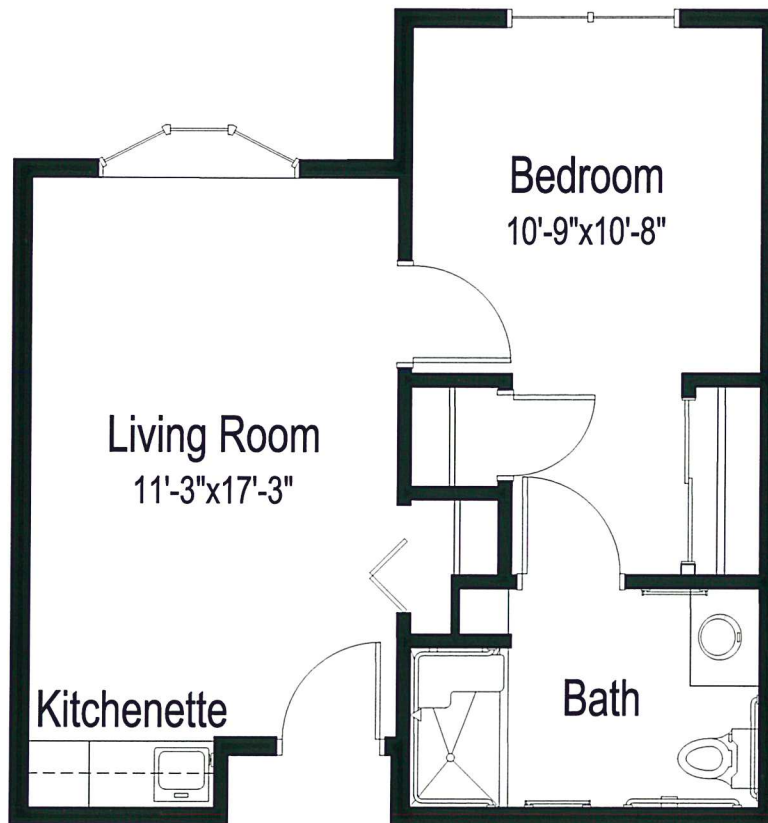




## Floor Plan



One bedroom, one bathroom  
495 square feet  
*(dimensions and square footage may vary)*

411 7th Ave NW • Arlington, MN 55307 • (507) 964-5156 • [good-sam.com/arlingtonmn](http://good-sam.com/arlingtonmn)



The Evangelical Lutheran Good Samaritan Society provides housing and services to qualified individuals without regard to race, color, religion, gender, disability, familial status, national origin or other protected statuses according to applicable federal, state or local laws. Some services may be provided by a third party. All faiths or beliefs are welcome. © 2015 The Evangelical Lutheran Good Samaritan Society. All rights reserved. 15-G1770