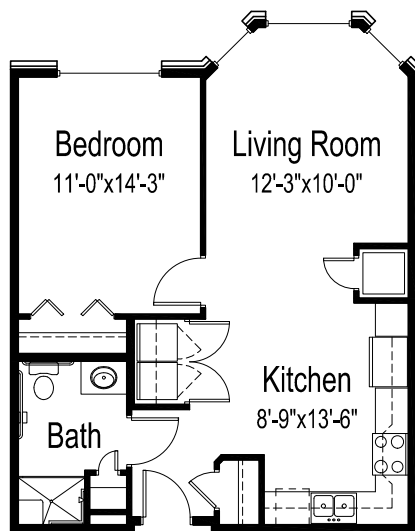
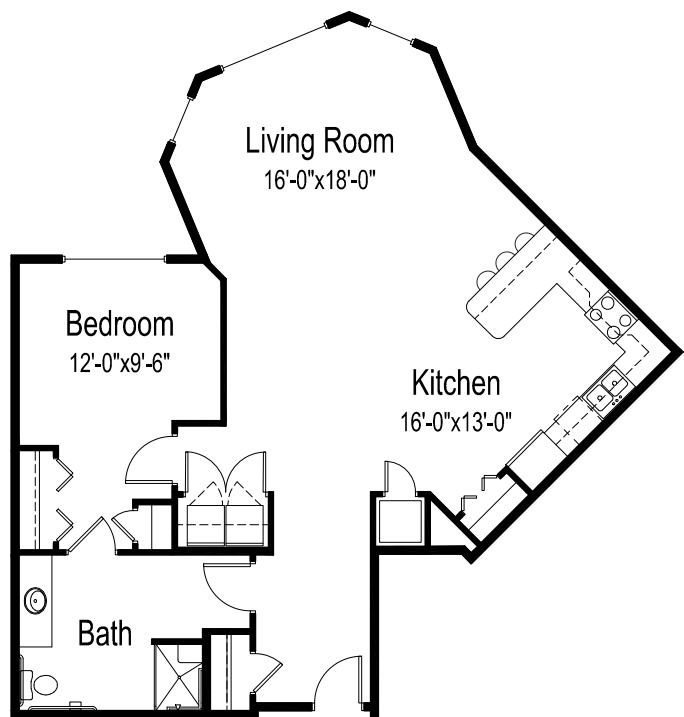




## Floor plans



**Floor plan A**  
One bedroom, one bathroom  
660 square feet



**Floor plan A1**  
One bedroom, one bathroom  
1,030 square feet

*(dimensions and square footage may vary)*

605 Lake Ave N • Battle Lake MN 56515 • (218) 862-5230 • [good-sam.com/battlelake](http://good-sam.com/battlelake)



The Evangelical Lutheran Good Samaritan Society provides housing and services to qualified individuals without regard to race, color, religion, gender, disability, familial status, national origin or other protected statuses according to applicable federal, state or local laws. Some services may be provided by a third party. All faiths or beliefs are welcome. © 2015 The Evangelical Lutheran Good Samaritan Society. All rights reserved. 15-G1073