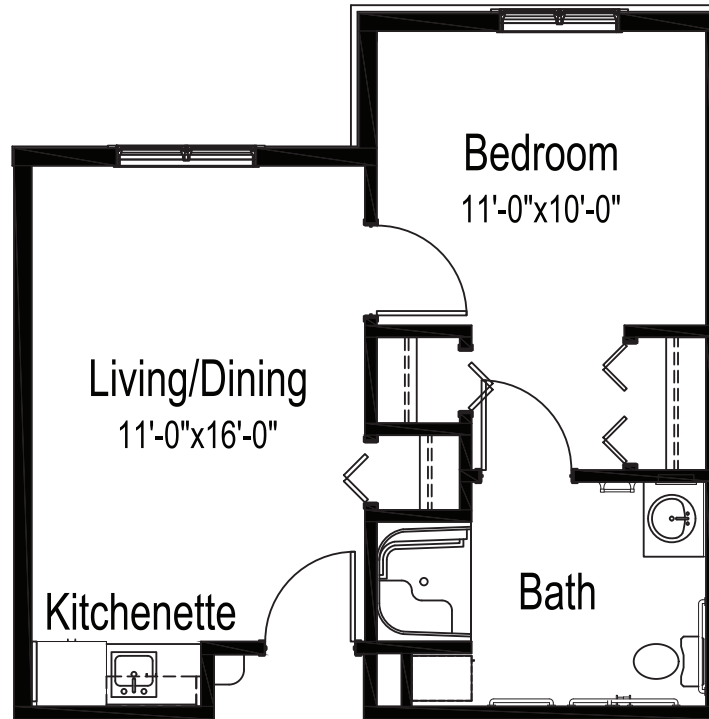


Assisted living apartment

FLOOR PLAN



One bedroom, one bathroom

440 square feet

(Dimensions and square footage may vary)

Good Samaritan Society – Grand Island Village

(308) 384-3535

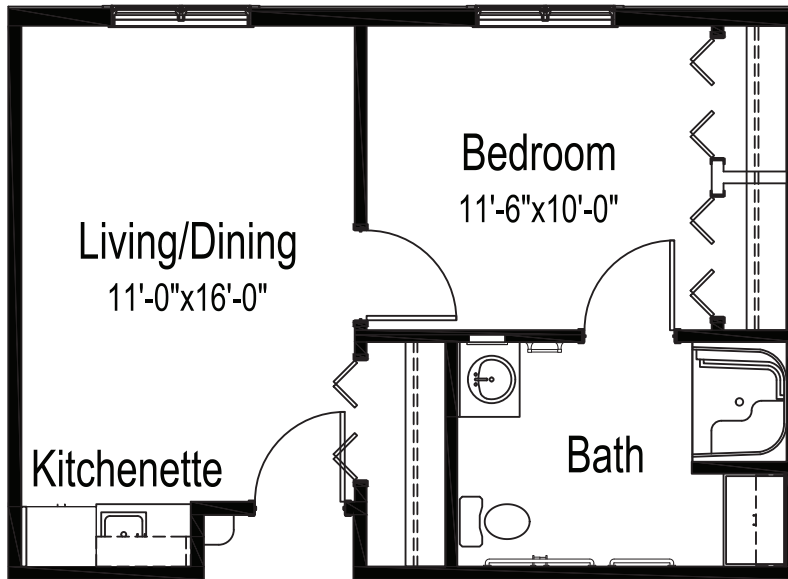
4075 Timberline St • Grand Island, NE 68803

good-sam.com



Assisted living apartment

FLOOR PLAN



One bedroom, one bathroom

450 square feet

(Dimensions and square footage may vary)

Good Samaritan Society – Grand Island Village

☎ (308) 384-3535

📍 4075 Timberline St • Grand Island, NE 68803

🖱 good-sam.com

