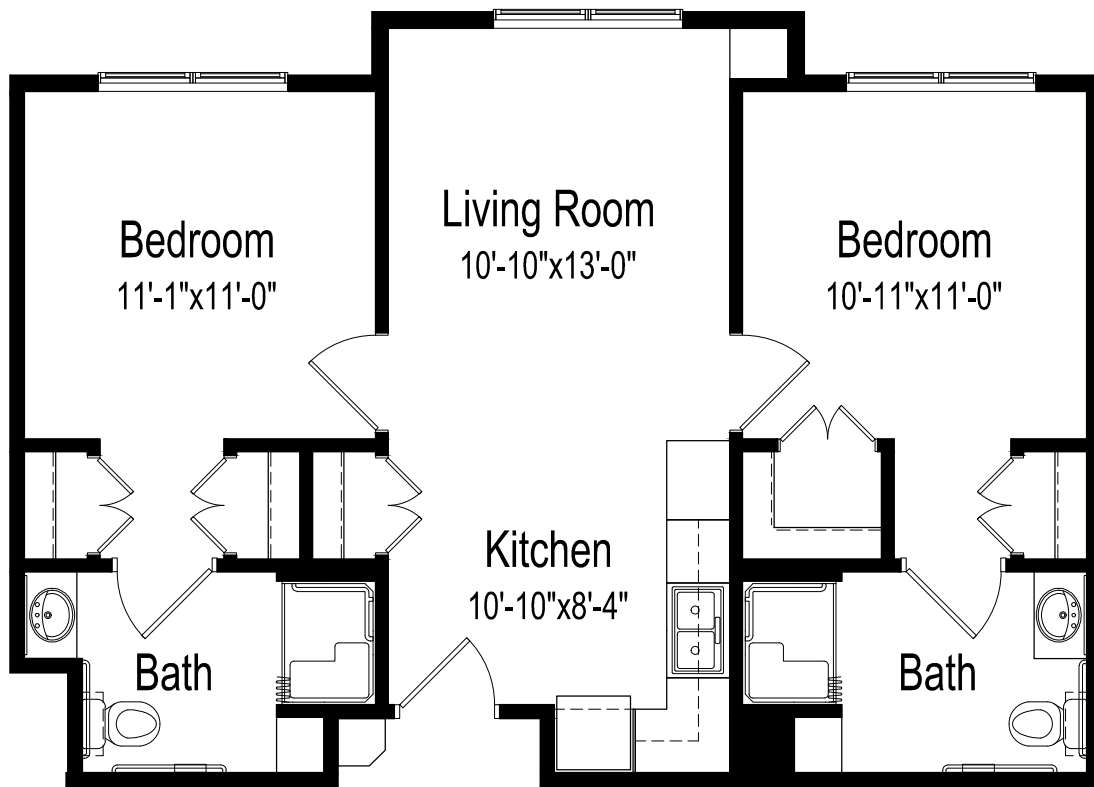




Assisted living floor plan



Two bedrooms, two bathrooms

727 square feet

(dimensions and square footage may vary)

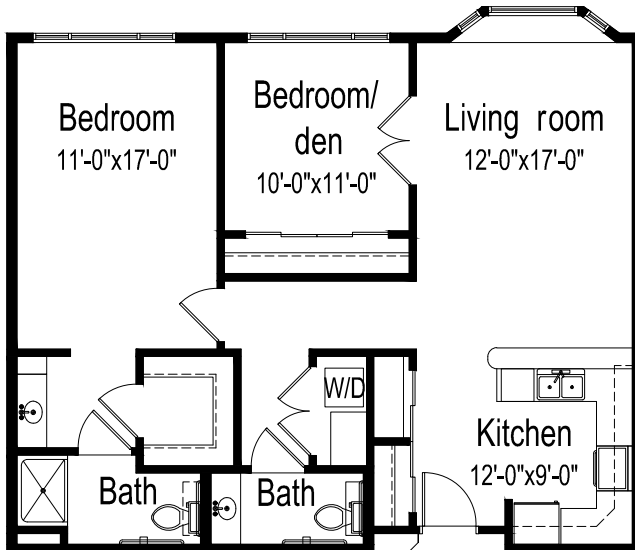
4400 W Creekside Dr • Sioux Falls, SD 57106 • (605) 331-5507 • good-sam.com



The Evangelical Lutheran Good Samaritan Society (the Society) and Owner comply with applicable Federal civil rights laws and does not discriminate against any person on the grounds of race, color, national origin, disability, familial status, religion, sex, age, sexual orientation, gender identity, gender expression, veteran status or other protected statuses except as permitted by applicable law, in admission to, participation in, or receipt of the services and benefits under any of its programs and activities, and in staff and employee assignments to individuals, whether carried out by the Society directly or through a contractor or any other entity with which the Society arranges to carry out its programs and activities. All faiths or beliefs are welcome. © 2017 The Evangelical Lutheran Good Samaritan Society. All rights reserved. ATENCIÓN: si habla español, tiene a su disposición servicios gratuitos de asistencia lingüística. Llame al 1-866-477-5343. LUS CEEV: Yog tias koj hais lus Hmoob, cov kev pab txog lus, muaj kev pab dawb rau koj. Hu rau 1-866-477-5343. 17-G0146



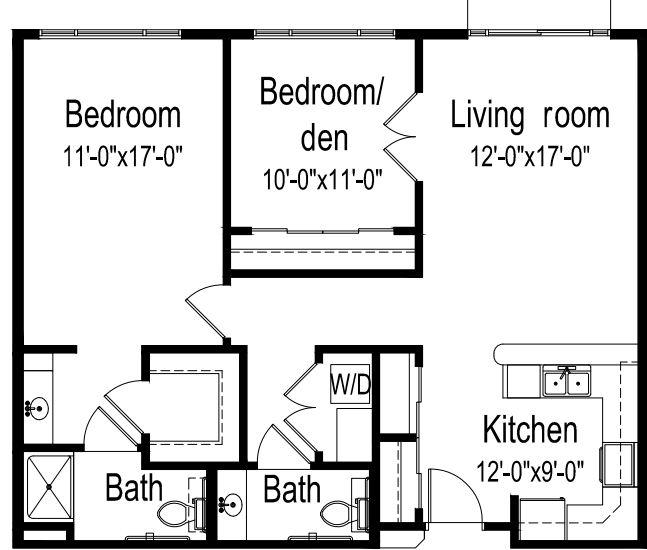
Lodge apartment floor plan



Two bedrooms, 1.5 bathrooms with bay window

970 square feet

(Dimensions and square footage may vary)



Two bedrooms, 1.5 bathrooms with patio

970 square feet

(Dimensions and square footage may vary)

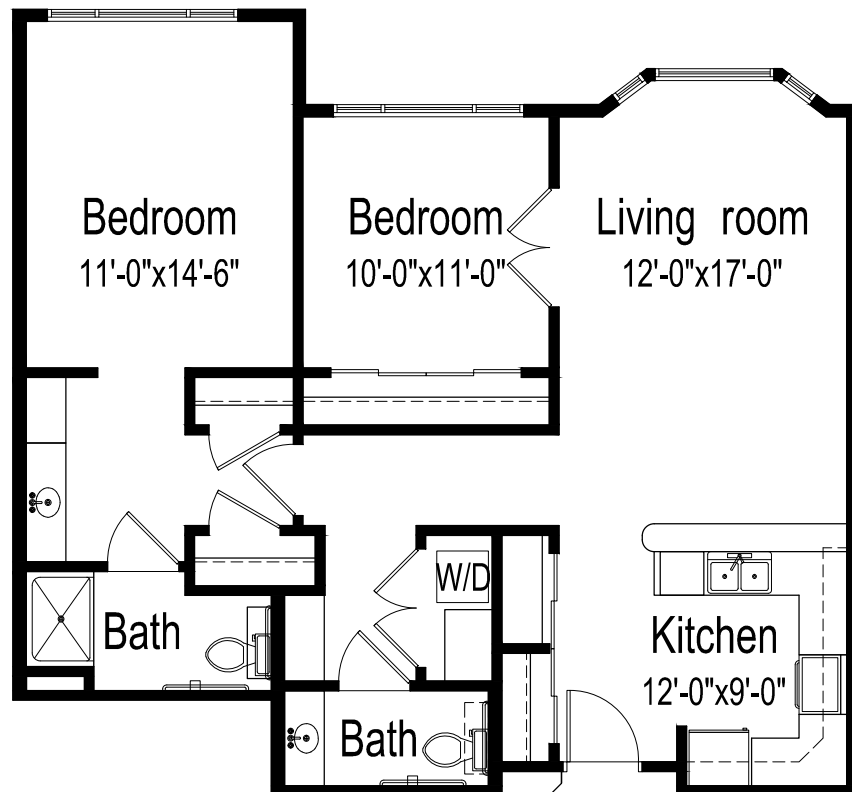
4400 W Creekside Dr • Sioux Falls, SD 57106 • (605) 331-5507 • good-sam.com/prairiecreek



The Evangelical Lutheran Good Samaritan Society (the Society) and Owner comply with applicable Federal civil rights laws and does not discriminate against any person on the grounds of race, color, national origin, disability, familial status, religion, sex, age, sexual orientation, gender identity, gender expression, veteran status or other protected statuses except as permitted by applicable law, in admission to, participation in, or receipt of the services and benefits under any of its programs and activities, and in staff and employee assignments to individuals, whether carried out by the Society directly or through a contractor or any other entity with which the Society arranges to carry out its programs and activities. All faiths or beliefs are welcome. © 2019 The Evangelical Lutheran Good Samaritan Society. All rights reserved. ATENCIÓN: si habla español, tiene a su disposición servicios gratuitos de asistencia lingüística. Llame al 1-866-477-5343. ACHTUNG: Wenn Sie Deutsch sprechen, stehen Ihnen kostenlos sprachliche Hilfsdienstleistungen zur Verfügung. Rufnummer: 1-866-477-5343. 191235



Lodge apartment floor plan



**Two bedrooms, 1.5 bathrooms
with split closets**

970 square feet

(Dimensions and square footage may vary)

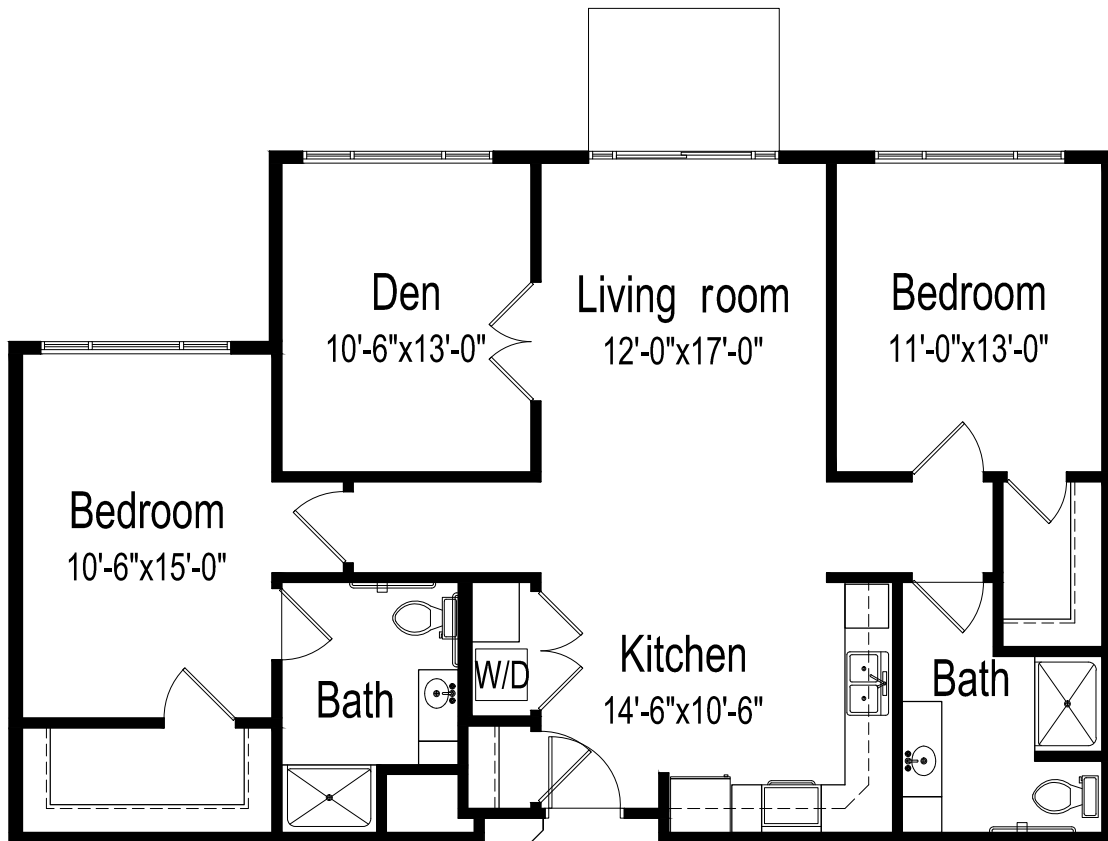
4400 W Creekside Dr • Sioux Falls, SD 57106 • (605) 331-5507 • good-sam.com/prairiecreek



The Evangelical Lutheran Good Samaritan Society (the Society) and Owner comply with applicable Federal civil rights laws and does not discriminate against any person on the grounds of race, color, national origin, disability, familial status, religion, sex, age, sexual orientation, gender identity, gender expression, veteran status or other protected statuses except as permitted by applicable law, in admission to, participation in, or receipt of the services and benefits under any of its programs and activities, and in staff and employee assignments to individuals, whether carried out by the Society directly or through a contractor or any other entity with which the Society arranges to carry out its programs and activities. All faiths or beliefs are welcome. © 2019 The Evangelical Lutheran Good Samaritan Society. All rights reserved. ATENCIÓN: si habla español, tiene a su disposición servicios gratuitos de asistencia lingüística. Llame al 1-866-477-5343. ACHTUNG: Wenn Sie Deutsch sprechen, stehen Ihnen kostenlos sprachliche Hilfsdienstleistungen zur Verfügung. Rufnummer: 1-866-477-5343. 191235



Lodge apartment floor plan



Two bedrooms, two bathrooms with den, patio

1,120 square feet

(Dimensions and square footage may vary)

4400 W Creekside Dr • Sioux Falls, SD 57106 • (605) 331-5507 • good-sam.com/prairiecreek



The Evangelical Lutheran Good Samaritan Society (the Society) and Owner comply with applicable Federal civil rights laws and does not discriminate against any person on the grounds of race, color, national origin, disability, familial status, religion, sex, age, sexual orientation, gender identity, gender expression, veteran status or other protected statuses except as permitted by applicable law, in admission to, participation in, or receipt of the services and benefits under any of its programs and activities, and in staff and employee assignments to individuals, whether carried out by the Society directly or through a contractor or any other entity with which the Society arranges to carry out its programs and activities. All faiths or beliefs are welcome. © 2019 The Evangelical Lutheran Good Samaritan Society. All rights reserved. ATENCIÓN: si habla español, tiene a su disposición servicios gratuitos de asistencia lingüística. Llame al 1-866-477-5343. ACHTUNG: Wenn Sie Deutsch sprechen, stehen Ihnen kostenlos sprachliche Hilfsdienstleistungen zur Verfügung. Rufnummer: 1-866-477-5343. 191235