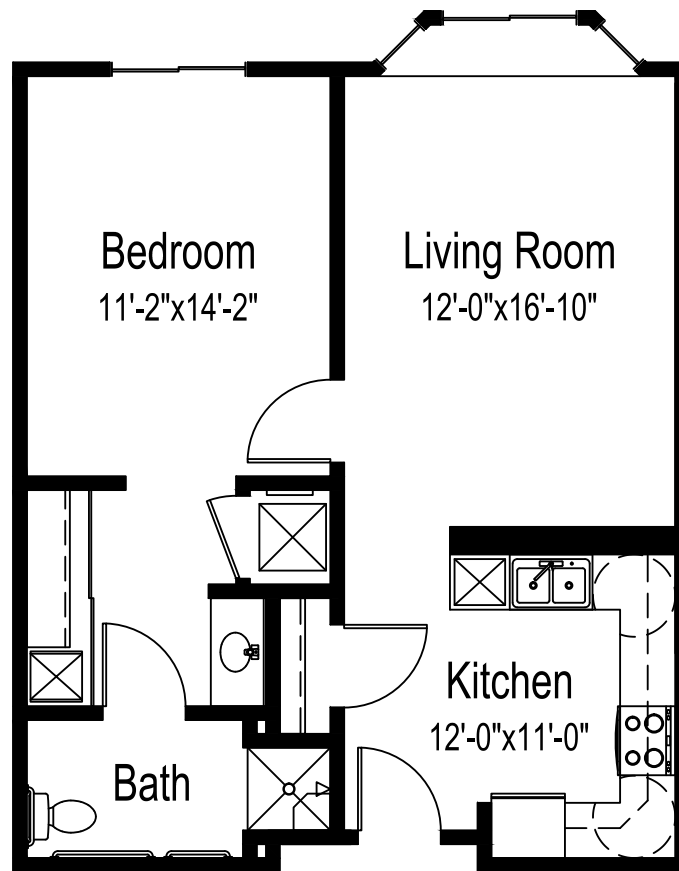




Dogwood



One bedroom, one bathroom

699 square feet

(Dimensions and square footage may vary)

For more information on our apartment homes or optional assisted living services, please contact our sales director by calling (651) 489-3293 or visit good-sam.com/hprose.

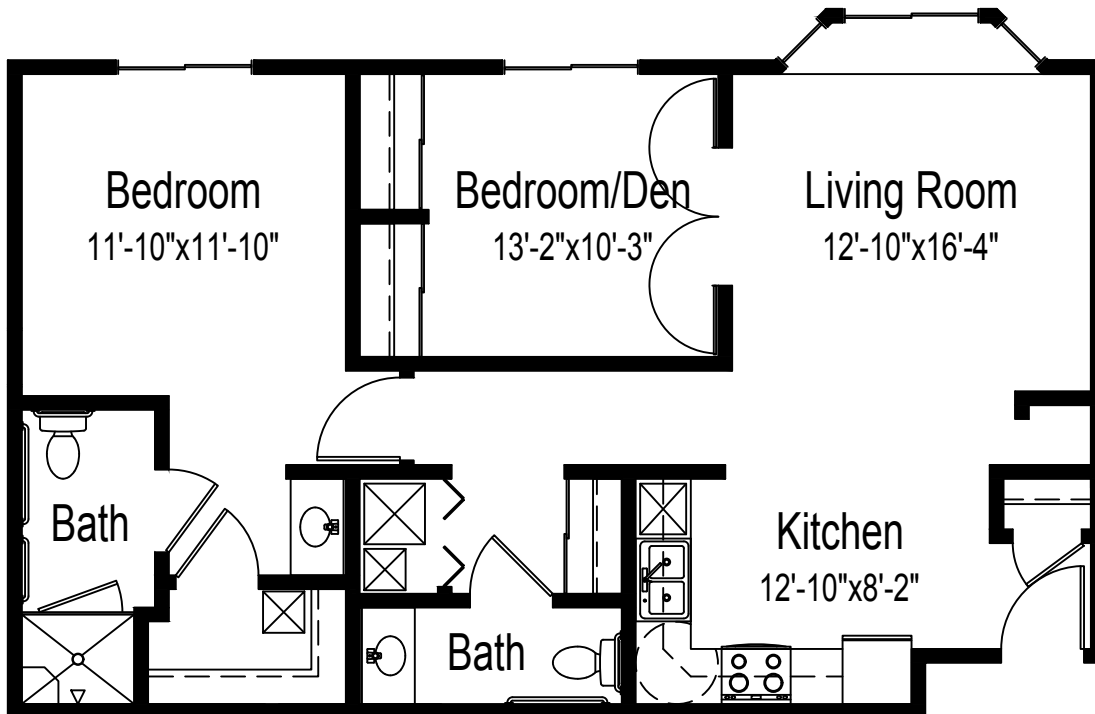
563 County Rd B W • Roseville, MN 55113 • (651) 489-3293 • good-sam.com/hprose



The Evangelical Lutheran Good Samaritan Society (the Society) and Owner comply with applicable Federal civil rights laws and does not discriminate against any person on the grounds of race, color, national origin, disability, familial status, religion, sex, age, sexual orientation, gender identity, gender expression, veteran status or other protected statuses except as permitted by applicable law, in admission to, participation in, or receipt of the services and benefits under any of its programs and activities, and in staff and employee assignments to individuals, whether carried out by the Society directly or through a contractor or any other entity with which the Society arranges to carry out its programs and activities. All faiths or beliefs are welcome. © 2017 The Evangelical Lutheran Good Samaritan Society. All rights reserved. ATENCIÓN: si habla español, tiene a su disposición servicios gratuitos de asistencia lingüística. Llame al 1-866-477-5343. LUS CEEV: Yog tias koj hais lus Hmoob, cov kev pab txog lus, muaj kev pab dawb rau koj. Hu rau 1-866-477-5343. 17-G0644



Birch



One bedroom plus den, one and one-half bathrooms

929 square feet

(Dimensions and square footage may vary)

For more information on our apartment homes or optional assisted living services, please contact our sales director by calling (651) 489-3293 or visit good-sam.com/hprose.

563 County Rd B W • Roseville, MN 55113 • (651) 489-3293 • good-sam.com/hprose



The Evangelical Lutheran Good Samaritan Society (the Society) and Owner comply with applicable Federal civil rights laws and does not discriminate against any person on the grounds of race, color, national origin, disability, familial status, religion, sex, age, sexual orientation, gender identity, gender expression, veteran status or other protected statuses except as permitted by applicable law, in admission to, participation in, or receipt of the services and benefits under any of its programs and activities, and in staff and employee assignments to individuals, whether carried out by the Society directly or through a contractor or any other entity with which the Society arranges to carry out its programs and activities. All faiths or beliefs are welcome. © 2017 The Evangelical Lutheran Good Samaritan Society. All rights reserved. ATENCIÓN: si habla español, tiene a su disposición servicios gratuitos de asistencia lingüística. Llame al 1-866-477-5343. LUS CEEV: Yog tias koj hais lus Hmoob, cov kev pab txog lus, muaj kev pab dawb rau koj. Hu rau 1-866-477-5343. 17-G0644